

## What is the difference between Point-Of-Entry (POE) Filter compared to the Point-Of-Use (POU) Filter?



**POINT-OF-ENTRY (POE)**

Type : Pre-Filter

Location : Outdoor

Filters : Dirt & Sediment



**POINT-OF-USE (POU)**

Type : Purifier

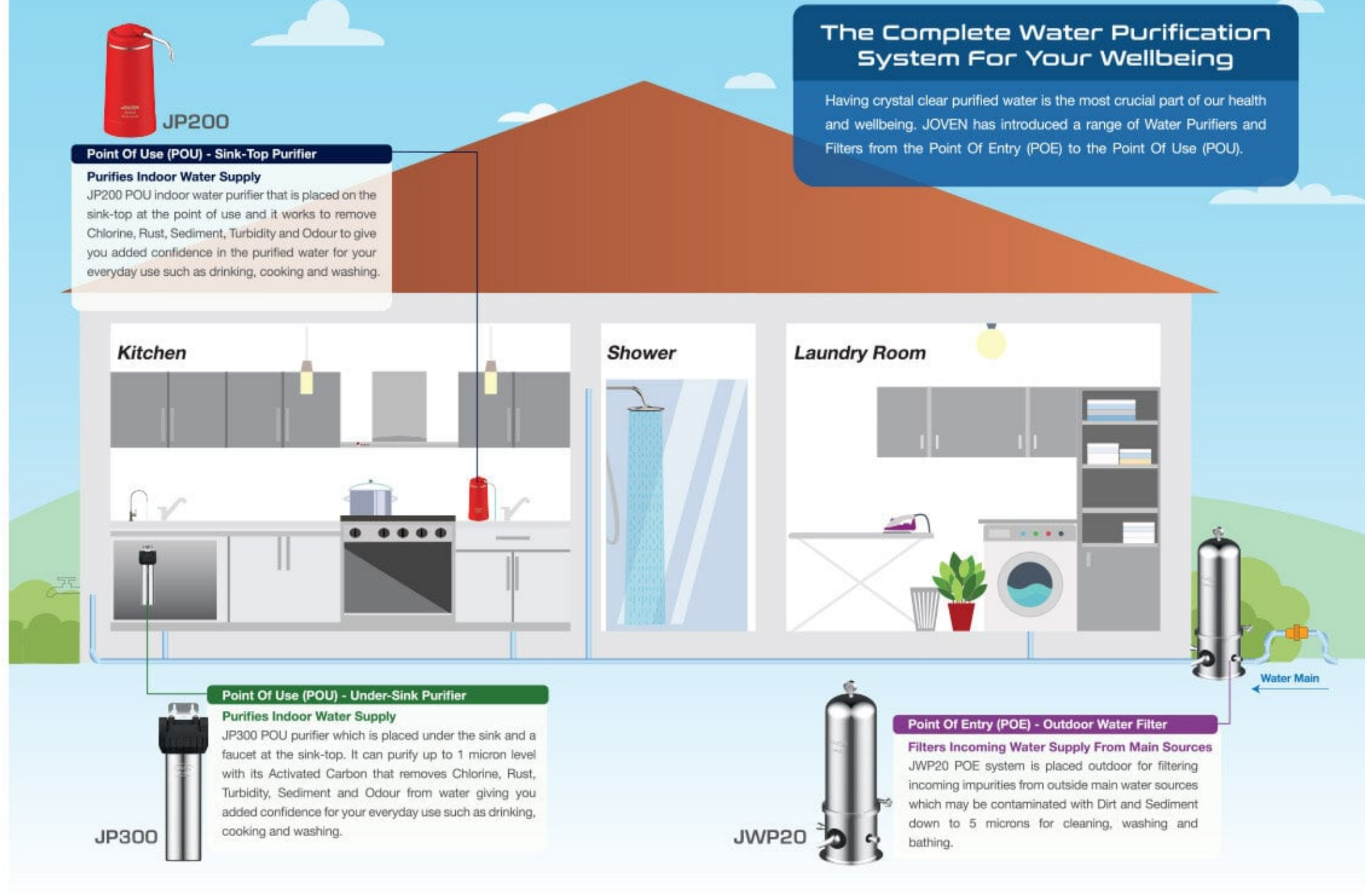
Location : Indoor

Purifies : Chlorine, Rust, Odour, Sediment and Contaminants from the water



A complete water purification system consists of Outdoor or Point-Of-Entry (POE) filtration and Indoor or Point-Of-Use (POU) purification to remove all the Dirt, Sediment, Chlorine and unwanted components from the incoming water supply of your premise.

## Location of the Point-Of-Entry & Point-Of-Use System in your home:



## Here are a few tips to consider before buying a water filter:

**1 Determine the type of water purifier you need for your home.**

### OUTDOOR WATER FILTERS

#### POINT OF ENTRY (POE)



**JWP20**

JWP20 is the 1st step of filtration that facilitates the removal of Dirt and Sediment but does not remove Chlorine to keep your pipes and water tank in sanitary condition.

### INDOOR WATER PURIFIER

#### POINT OF USE (POU)



**JP300 / JP200**

JP300 and JP200 are indoor water purifiers that will purify off the Chlorine, Odour, Dirt, Sediment, Turbidity and Contaminants to give you crystal-clear water for your everyday such as drinking, cooking and washing chores.

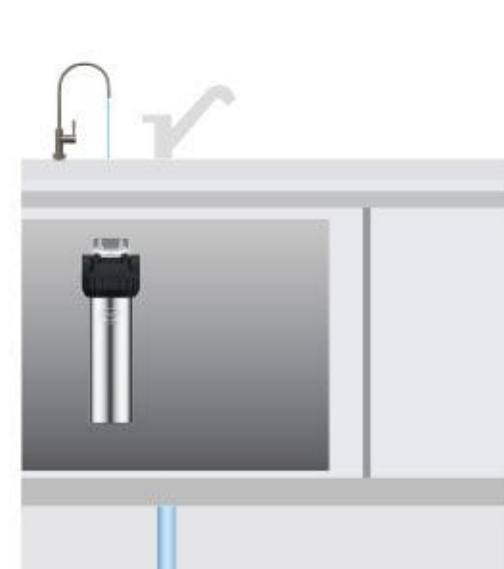
**2 Check the area where you are going to install your Indoor or Outdoor water purifier.**

### JP200 - (POU) Sink-Top Purifier



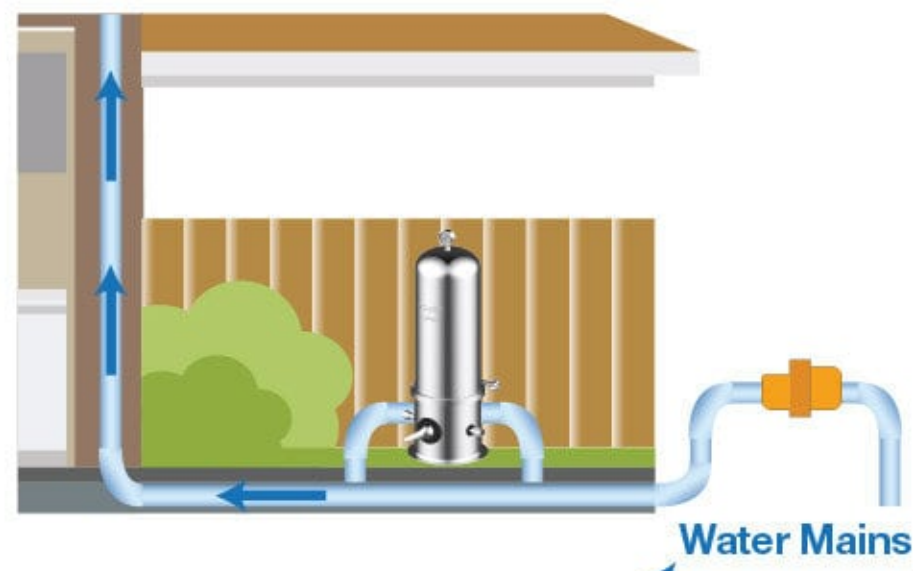
The Sink-Top purifier model JP200 will be a good solution for a fast and easy installation and with budget in mind if counter top space is not an issue

### JP300 - (POU) Under-Sink Purifier



The JP300 is an under-the-sink water purifier system which will give you more free working space above your counter-top as the purifier is placed under the sink and only a faucet installed above the counter top for purified water

### JWP20 - (POE) Outdoor Water Filter



JWP20 POE system is placed outdoor for filtering incoming impurities from outside main water sources

**3 Check your installation connections**

### JWP20



Placing outside the house with the incoming water connection, a connection of 3/4" BSP pipe is required for both Inlet and Outlet and a backwash pipe of 1/2" required to drain off water during backwashing

### JP300

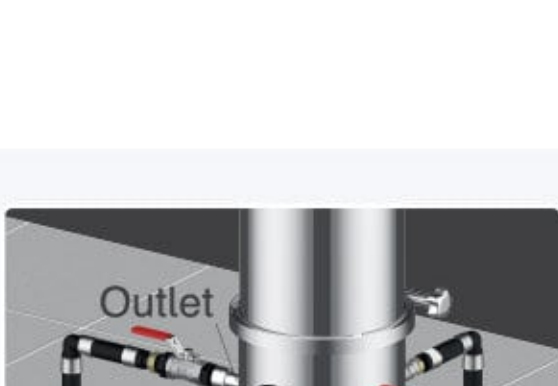


Mark your purifier location to install below the sink and install the 3-Way Valve to divert water into water purifier by the 1/4" Hose connection. Install the SUS304 Faucet above your sinktop and connect the 1/4" Hose to complete the installation

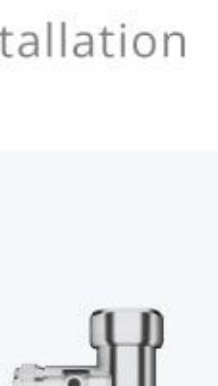
### JP200



Just install the Selector Valve to your standard 1/2" BSP Pipe or another option to have a direct valve to the JP200 purifier along with an adaptor to connect a 1/2" to 1/4" Hose for the JP200 water purifier



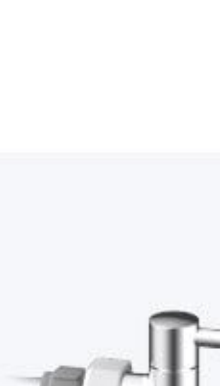
SUS304 Faucet



3-Way Valve



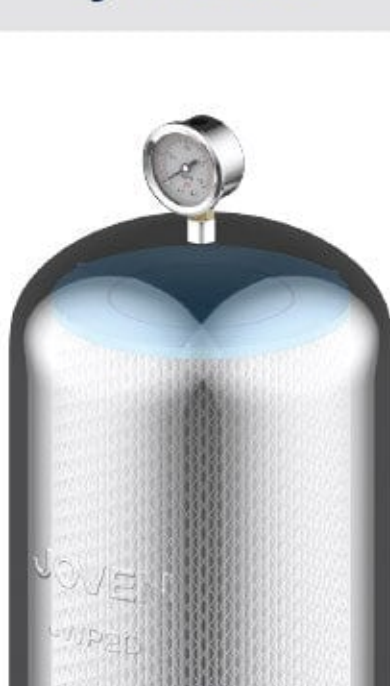
Kitchen Sink Tap



Direct Plumbing Tap

**4 Replace cartridge periodically.**

### JWP20C



Backwash monthly

Replace Cartridge after 2 years or when water flow or condition is unsatisfactory

### JP300C & JP200C



Replace Cartridge when water flow or taste is unsatisfactory